



HIGH SECURITY
EASY TO USE

The challenge

Data protection is in the public focus and has become one of the greatest IT challenges facing business and politicians. There are daily reports of data theft, data misuse/abuse and business espionage.

The comprehensive protection of company data is critical. In this context companies expect not only the best security solution – it must be flexible and simple to integrate into the day-to-day work and company infrastructure.

Company security – automatic, contact-free and mobile

AirID2 combines a card reader and an ID card cover. It secures data transfer using a 256-bit encryption standard, connected via Bluetooth low energy technology. Company employees can use their existing ID card with the existing Public Key infrastructure (PKI). AirID2 looks like an ID card with a distinctive design. You always keep the AirID2 together with your ID-card and in contrast to traditional card readers, the chip (card) remains in the reader for every application.

AirID mini offers a practical solution, which can be easily integrated into the existing company IT system.

AirID FIDO is structurally identical to the **AirID mini** and works seamlessly with almost all leading authentication solutions with the FIDO standard and is used where a PKI is not available and not intended to be set up.

With AirIDs you can meet all the modern security demands in a heterogenous network environment. In the form of a mobile card reader, the smartcard solution with its distinctive design fits discreetly into your daily routine, providing secure communication. The integration into the company infrastructure is carried out in close cooperation with the customer.

Obvious advantages for you:

- | Familiar operation with your PKI card
- | Very high encryption standard for your internal company data
- | Uncomplicated integration into your company infrastructure
- | Secure wireless connection to all Bluetooth-enabled devices (tablet, smartphone, PC, notebook etc.)
- | Access to respective working devices is automatically blocked at specified distance from AirID (Distance logout)

What are the requirements for the integration of AirID technology in your company?

The use of our AirIDs is compatible for

- | companies with an existing Public Key Infrastructure (PKI)
- | companies which intend to set up a Public Key Infrastructure (PKI)
- | companies without PKI where a FIDO standard is sufficient (AirID FIDO)

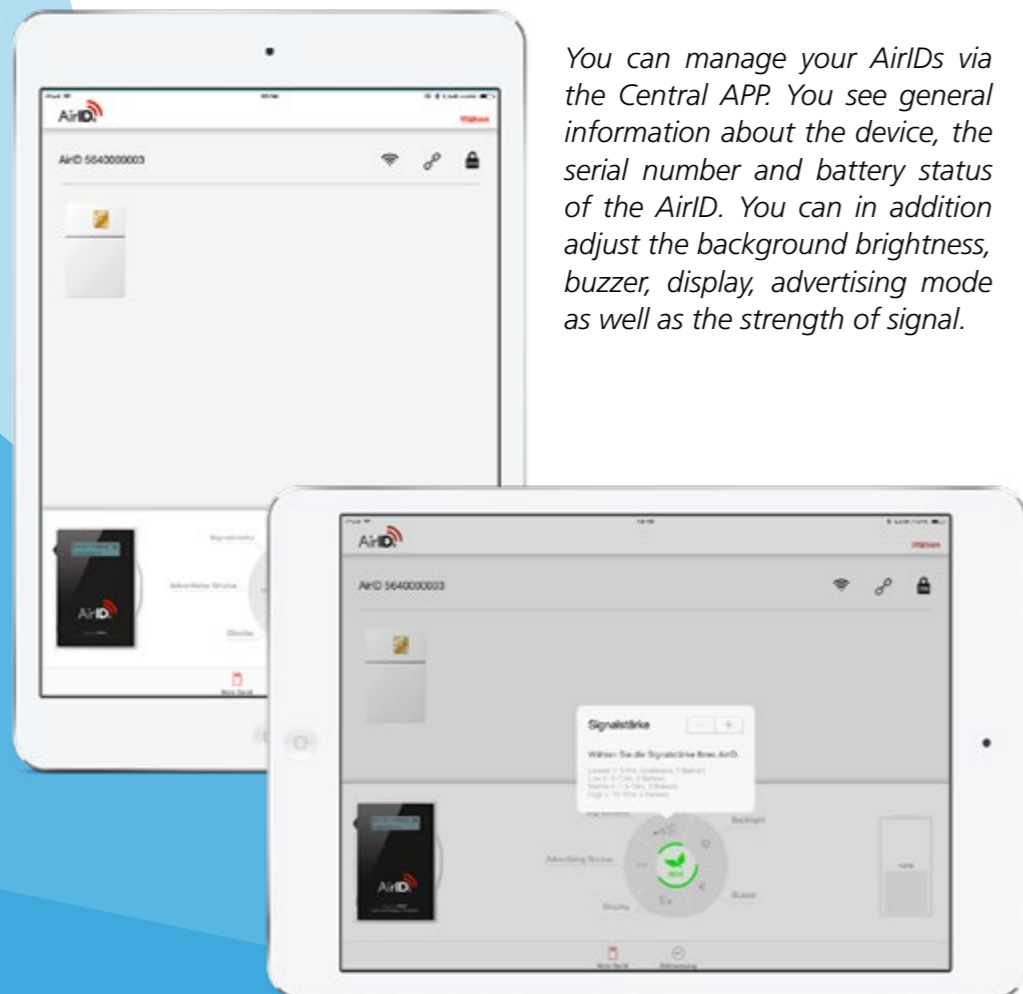
Moreover, if mobile security is important to you and you would like to combine card reader and company ID, we are the right partners for you.



One device for all platforms

Whether Windows, Android or iOS –AirID technology works independent of any platform. The choice of operating system is yours. The automatic distance logout is possible with any provider and a significant distinction to other card readers. When you move with the AirID too far away from your working device, then the connection will automatically be broken. Both the PKI smart card and the AirID remain at all times in the safest place – directly with you, on your person.

We will show you the additional possibilities offered by the various platforms.



You can manage your AirIDs via the Central APP. You see general information about the device, the serial number and battery status of the AirID. You can in addition adjust the background brightness, buzzer, display, advertising mode as well as the strength of signal.

Windows (from Version 8)

The great advantage of Windows is that for most existing smart cards there is a compatible card provider available in a type of middleware. To be able to use AirID, you simply have to install a single AirID driver. This driver defines a common language between Windows and AirID2.

What possibilities does AirID provide for Windows?

The basic structure of Windows enables the use of AirID like any standard card reader and the implementation of individual encryptions where necessary. In this way you can for example use index files for encryption and decryption via EFS (encrypting file system) and in connection with AirID technology as an additional security factor. You can also use AirID with the hard disk encryption (Bitlocker), which Windows has installed as standard. Should access to the hard disk require the enabling of an index file, you will need your PKI smart card and the chip card PIN (2 factor authentication). You can also encrypt, decrypt and sign emails via Outlook. The signing function ensures that emails definitely come from the specified sender.

iOS / Android

In contrast to Windows, it is not standard that iOS / Android support smart cards and card readers. Therefore, for most cards it is necessary first to develop a card driver. These drivers enable the encryption and secure use of apps.

What opportunities does AirID offer iOS and Android?

We offer a variety of possibilities for you to use AirID technology with iOS or Android, one being the provision of the SDK (software development kit). You can then implement the AirID driver in your own apps. Alternatively, we would be happy to do this for you. You can also acquire apps which manage for example your calendar, contacts, documents, and tasks. AirID supports container technology, so that secure containers can be set up for business content and apps.

As with other computer systems the use of AirID enables the use of 2-factor authentication where the PKI smart card as well the PIN of the smart card are required to open the encrypted app or encrypted container.



Connect your AirID to all your devices

Internal company data require especially sensitive treatment. With AirID you can encrypt data not only on PCs but also on mobile devices. All that is required is a single set up between AirID and the respective working device (laptop, PC, smartphone, tablet). All necessary security processes operate automatically 'in the background'. Using the PKI card is simpler with AirID, an inconspicuous companion of great impact.



Discreet appearance and familiar handling with AirID

Small like your personal ID: The design and size of AirID2 render it the ideal for day-to-day use. In addition to the security function your AirID2 is also the cover for your ID card. You keep your company ID card as usual with you. The card is completely enclosed in the card case and totally visible through the transparent cover. Weighing less than 50 grams, the AirID2 can be carried quite comfortably on a strap or lanyard.

Lighter and more discreet – our AirID mini in connection with a smart card in Micro-SIM (mini-UICC) format offers virtually the same range of functions as its big brother.

AirID as a secure identification device

RFID technology (radio frequency identification) provides the electronic record of time, and checks entrance and access. AirID supports this technology. The smart card need not be removed from the AirID, but can be used as usual with the appropriate authorisation, for example, to open doors.

Mobile and secure, use your PIM functions with AirID technology

Personal information management (PIM) includes the management of calendars, contacts, documents, emails and tasks. AirID supports PIN standard functionality of existing products from other manufacturers and thus guarantees the secure encryption of company internal information.

The high standard of security provides not only encrypted data transfer, but also secures surfing – within the company as well as outside your company! With AirID you can happily operate your device despite sensitive messages and the exchange of confidential company internal data.



Keep full access control

A further application is distance logout. Via Bluetooth low energy connection between AirID and PC/mobile device, it is possible to disable access automatically without mouse click or contact. As with a telemeter AirID can block access to the working device as soon as it moves beyond a specified distance.



AirID2


 **Jog Dial**
comfortable
operation
with one hand

 **USB**
easy loading
and Update
the device




 **Smartcard format**
ID-1 (full-size)

AirID mini

 **Smartcard format**
Mini-UICC
(Micro SIM, replaceable)



 **USB**
easy loading
and Update
the device

AirID2 and AirID mini in brief

Characteristics/Features

- | Bluetooth 5.0 (Low Energy)
- | Wireless connection between AirID and working device is AES 256 encrypted.
- | Supported by TO and T1 cards.
- | Compact size and minimal weight.
- | Battery capacity of over 2 weeks.

Advantages/Benefits

- | Combination of card reader and ID card cover.
- | Once only coupling of AirID with working device for permanent security.
- | RFIF functionality of card remains unchanged.
- | Highest smart card security, as card does not have to be removed from AirID and is always carried on the person.
- | Automatic distance logout as soon as Bluetooth connection is broken.

AirID gives you the opportunity to adapt your own individual firmware and drivers to facilitate integration into your infrastructure.

Supported platforms: Windows, iOS, Android, Linux and Mac OS.



SecurITy
made
in
Germany



Contact

You would like to learn more about AirID?

We are happy to advise you on the product and the optimal integration into your public key infrastructure. Implementation is adapted to your company requirements and carried out in close cooperation with you.

Together we achieve the highest standards of security!

Your AirID Team

